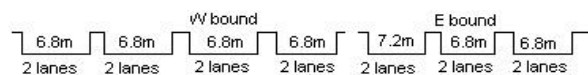


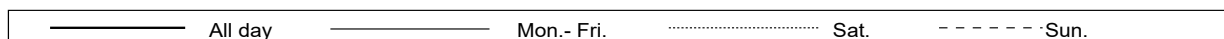
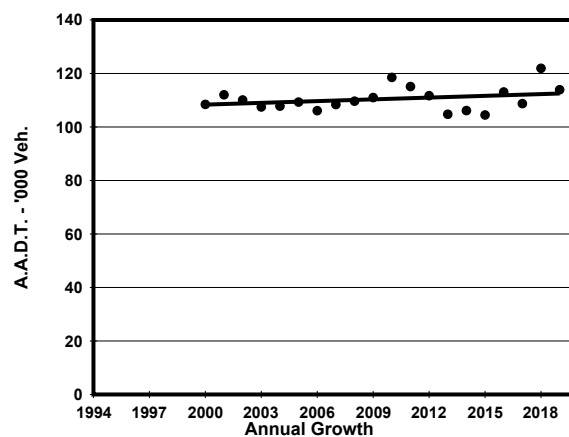
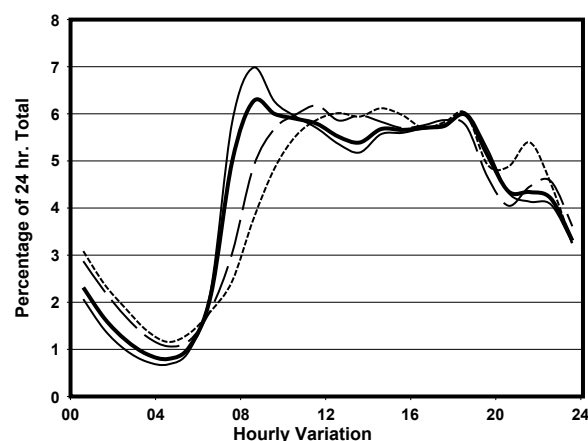
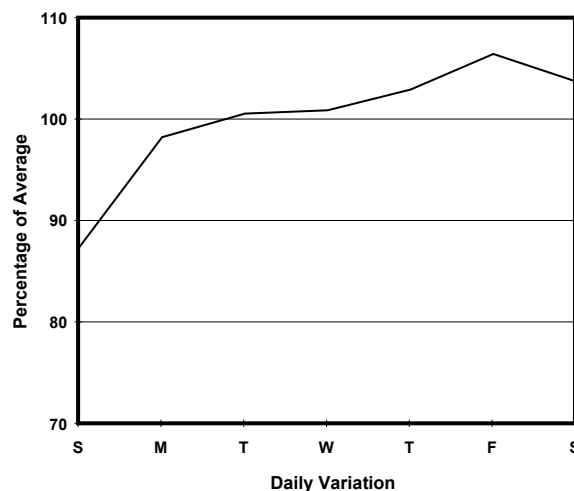
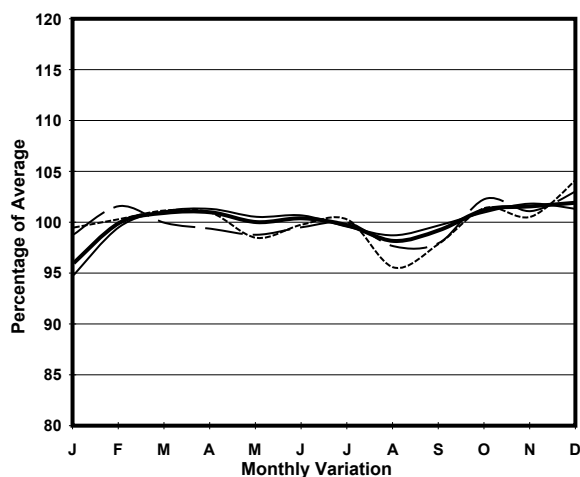
YEAR 2019

LINK ISLAND EASTERN CORRIDOR (from HEALTHY ST INT
EASTERN END to TAIKOO SHING INT WESTERN END)

CORE STATION 1003
ROAD NETWORK MAJOR
ROAD TYPE EXPRESSWAY



1. TRAFFIC FLOW VARIATION AND GROWTH



2. TRAFFIC CHARACTERISTICS (BY DIRECTION)

Parameter	All - Day	Mon. - Fri.	Sat.	Sun.
EAST BOUND				
A.A.D.T.	51420	52950	53460	44180
R 12 / 24 - %	66.1	67.3	64.1	61.1
R 16 / 24 - %	85.4	86.6	82.7	81.7
AM Peak Hour	0900-1000	0900-1000	0900-1000	0900-1000
One-way flow at AM peak hour	2980	3230	2840	2010
T - % (AM)	-	-	-	-
PM Peak Hour	1800-1900	1800-1900	1600-1700	1800-1900
One-way flow at PM peak hour	3070	3220	3110	2520
T - % (PM)	-	-	-	-
Prop.of commercial vehicles - 16 hr.	-	-	-	-
WEST BOUND				
A.A.D.T.	62500	63740	65480	56200
R 12 / 24 - %	70.7	71.9	68.5	66.3
R 16 / 24 - %	87.6	88.4	85.5	85.4
AM Peak Hour	0800-0900	0800-0900	0900-1000	0900-1000
One-way flow at AM peak hour	4290	4920	3930	2860
T - % (AM)	-	-	-	-
PM Peak Hour	1800-1900	1800-1900	1700-1800	1800-1900
One-way flow at PM peak hour	3740	3800	3940	3510
T - % (PM)	-	-	-	-
Prop.of commercial vehicles - 16 hr.	-	-	-	-

3. OTHER INFORMATION AND COMMENT